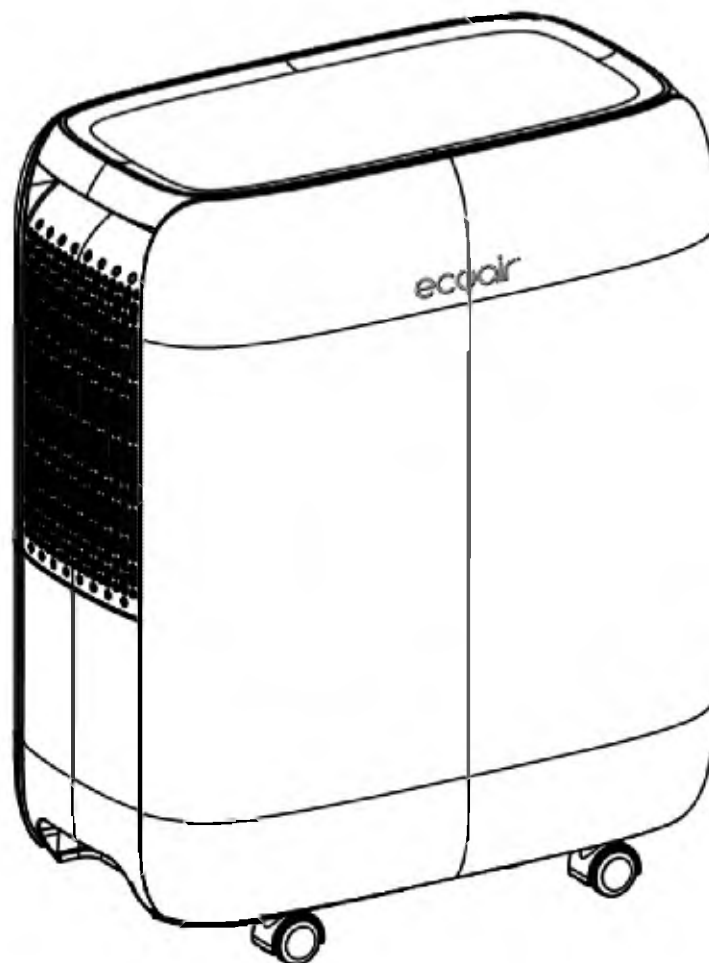


## DC12 MK2 & DC14 MK2

### Compressor Dehumidifier



## **Congratulations!**

You have purchased the very latest in dehumidification technology. Your new EcoAir high efficiency room appliance will give you many years of dependable service. Many features have been built into your EcoAir portable appliance to assure quiet operation, functional controls and the most economical operation.

<b>Key Features .....</b>	<b>Page 3</b>
<b>Quick Start Up .....</b>	<b>Page 4 - 6</b>
<b>Empty Water Tank Instructions.....</b>	<b>Page 6</b>
<b>Continuous Drainage Instructions .....</b>	<b>Page 7</b>
<b>Attention .....</b>	<b>Page 7</b>
<b>Maintenance .....</b>	<b>Page 8</b>
<b>Troubleshooting .....</b>	<b>Page 9 –10</b>
<b>Specifications .....</b>	<b>Page 10</b>

## **Appendix**

*App 1. Welcome*

*App 2. Guarantee Card*

*App 3. BS Plug Wiring*

*App 4. Important Safety Instructions*

*App 5. The Refrigerant R290 Gas*

**When using this appliance in European countries, the following information must be observed:**

Do not dispose of this product as unsorted waste.

It is prohibited to dispose of this appliance as domestic household waste. For disposal:

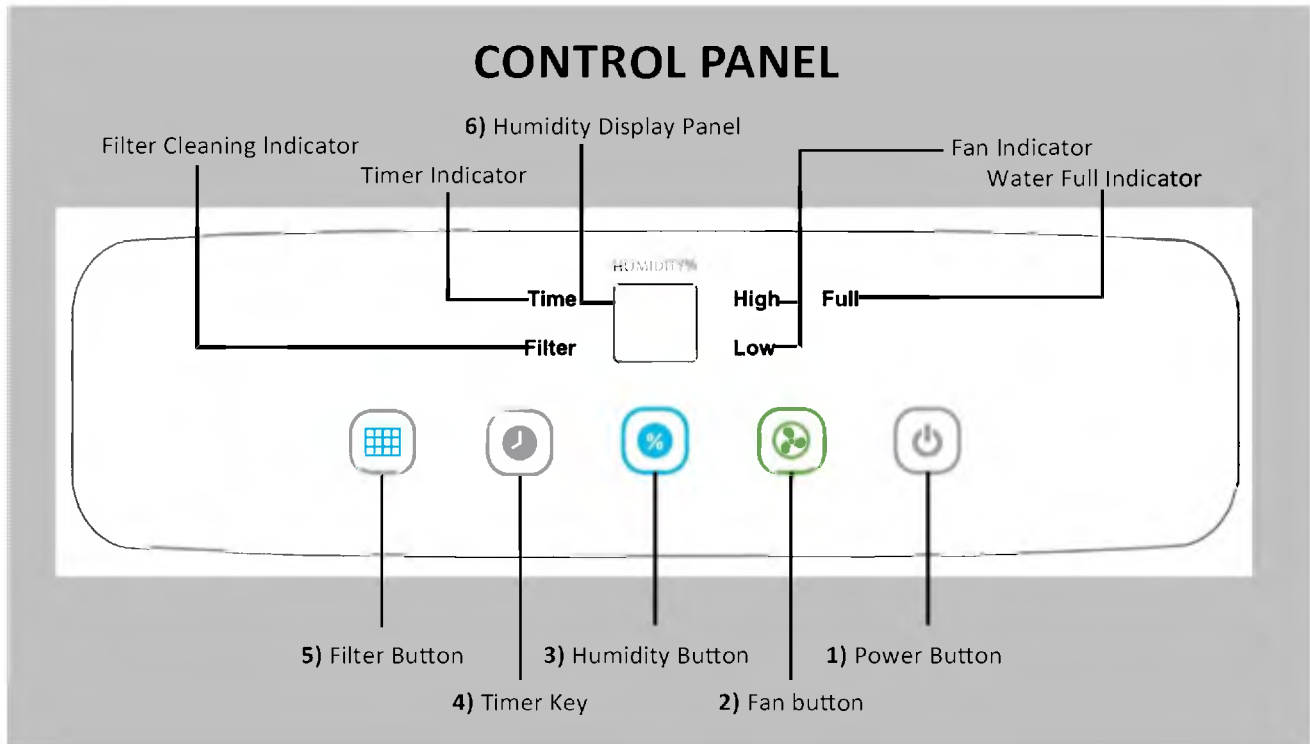
- Contact your local council
- The manufacturer will take back the old appliance for disposal when you replace it with a new product.
- Old products contain valuable resources, which should be recycled as scrap metal.



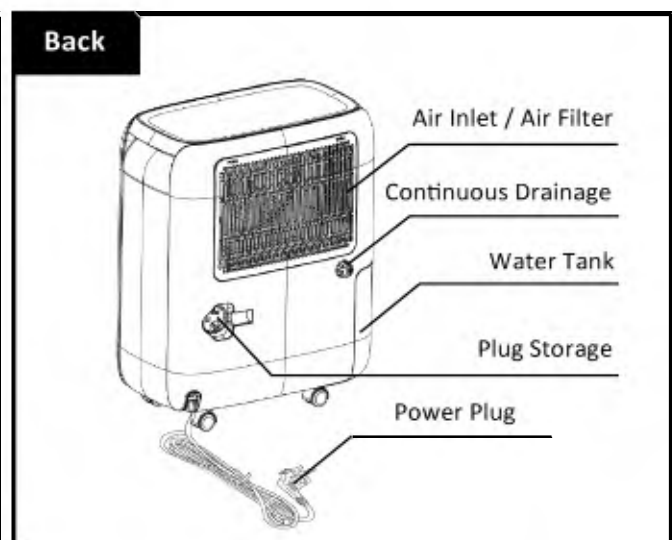
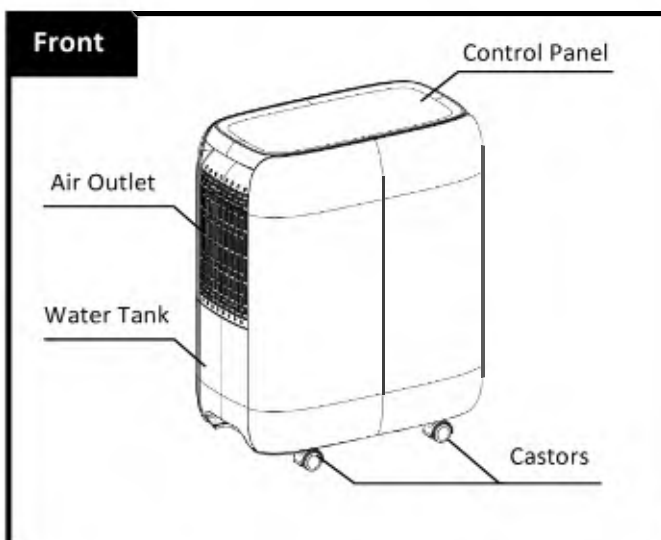
WEE/EC2601UR

Wild disposal of waste in forests and landscapes endangers your health when hazardous substances leak into the ground-water and find their way into the food chain.

# KEY FEATURES



1. **Power Button** - Turns dehumidifier **ON** or **OFF**.
2. **Fan Button** - Select for High or Low fan speed. When you need fast dehumidification, select high fan speed; when you need the unit to work quietly, select low fan speed.
3. **Humidity Button** - Press to set your desired humidity level—each press will increase the humidity by 5% within the range of 30% - 80% . Holding the humidity button can adjust the humidity quickly.
4. **Timer key** - Select timer ON or OFF. The timer can be set on hourly intervals from 1 to 24 hours.
5. **Filter Button** - Press to turn off the filter cleaning indicator. (When the dehumidifier has been operating for 250 hours, the Filter Cleaning Indicator will light up to remind you to clean the filter)
6. **Humidity Display Panel** - The humidity display window is defaulted to display the ambient humidity. It will display the set humidity when pressed. Five seconds later, it will turn back to display the ambient humidity.



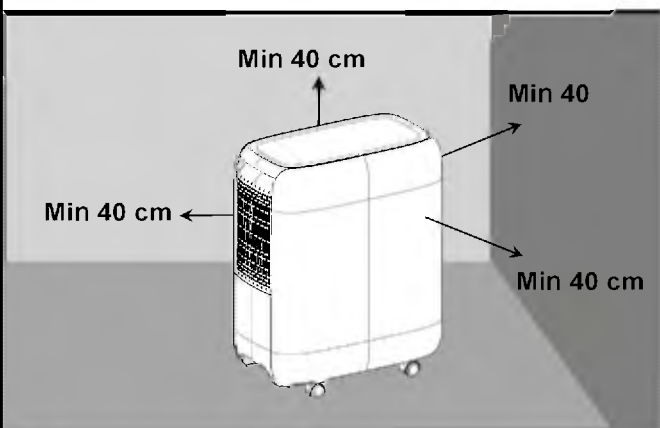
# QUICK START UP

## STEP 1 - WHERE TO POSITION YOUR DEHUMIDIFIER?

After unpacking your dehumidifier, place it upright to allow the compressor to stabilise for at least 4 hours before use.

Ensure the dehumidifier is a safe distance away from a wall or furniture, away from direct sunlight.

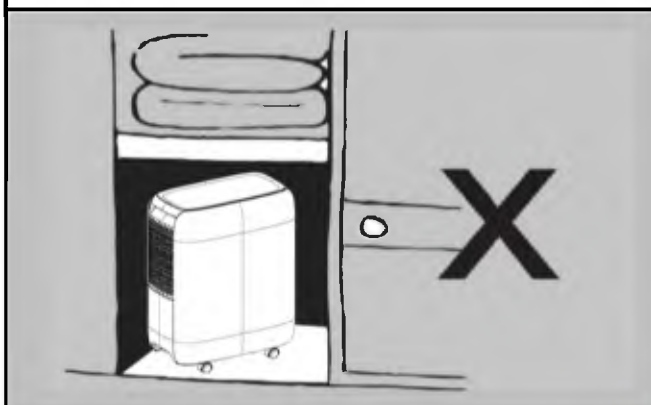
**Tip:** Position the dehumidifier in the dampest room or somewhere central like a landing or a hallway. As long as the internal doors are open the excess moisture from all of the rooms in the house will migrate naturally towards the dehumidifier and be processed.



## STEP 2 - CAUTION - AVOID USING IN



- Areas where ambient temperature falls below 5°C.
- Small confined area i.e. broom cupboard, boiler room, unventilated rooms etc.
- Close proximity to a heat source such as heater, tumble dryer, cooker.
- Dusty areas, building sites or an industrial environment where particles can clog up the filter or internal components. This will cause the dehumidifier to malfunction, voiding your guarantee.

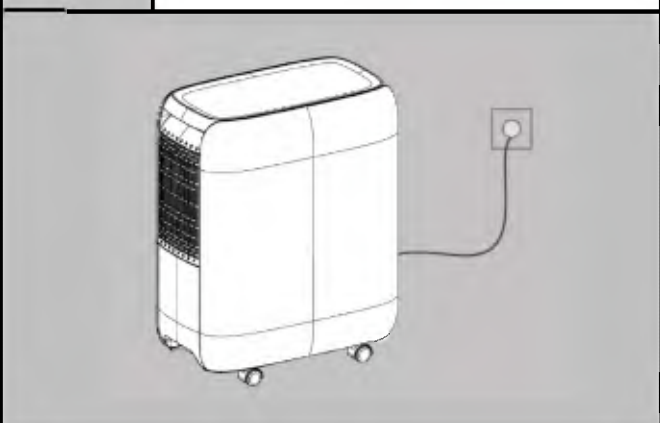


## STEP 3 - ON/ OFF



To Operate  
DC12 MK2/  
DC14 MK2

- Always place the dehumidifier in an upright position on an even level surface.
- Plug the dehumidifier into the mains socket, the standby mode indicator will remain on whilst the dehumidifier is plugged in to the mains.
- The dehumidifier performs best at a minimum ambient temperature of 15°C. Where the ambient temperature is below 15°C it will need to go into de-frost mode periodically to preserve the life of the compressor.
- Press the ON/OFF button to operate the dehumidifier.



## STEP 4 - FAN MODE



### Select for low fan speed

#### Low

- Use for quiet operation or when humidity has been reduced.
- Highly recommended for night use.

### Select for high fan speed

#### High

- Use for maximum moisture removal.
- Highly recommended for drying laundry or problem areas.

#### Tip:

When turning on the dehumidifier, if your desired humidity setting is higher than the actual humidity, the dehumidifier will run on fan-only mode to sample the air for 5-10 minutes, to sense the ambient humidity before switching off automatically.

# QUICK START UP

## STEP 5 - HUMIDITY BUTTON

HUMIDITY%

40

Select for the desired humidity.

Press this button to change the set humidity. The set humidity will increase 5% in the range of 30%-80% circularly. Hold the humidify button can adjust the humidity quickly.

### Note:

- There is an active humidistat which shows the actual humidity level (%RH) in the environment when the dehumidifier is running.
- The display will show the actual ambient humidity 5 seconds after the humidity level is set on the control panel.

## STEP 7 - FILTER CLEAN INDICATOR

Filter

- The filter clean indicator will light up when the filter needs cleaning.
- Once the filter has been cleaned and replaced into position, press the filter button to reset the filter clean indicator.
- To purchase a replacement filter please visit:

[www.ecoair.org](http://www.ecoair.org)

## STEP 8 - TANK FULL INDICATOR

Full

Full

- Indicator lights up when water tank is full or incorrectly inserted. The dehumidifier will automatically switch off.
- Remove water tank, empty and reinsert correctly.

### Note:

- If the tank is full or removed for more than a 3 minute period, an alarm will sound for about 10 seconds to alert the water tank needs emptying or placing back into position.
- When the water tank is full or removed, the controls are disabled.

## STEP 6 - TIMER

### SETTING TIMER OFF

Press the "TIMER" Key to select your desired running time

Time

- Whilst the dehumidifier is in operation press the timer button to set the dehumidifier to turn off after a set interval between 1-24hrs (1hr Increments)
- Once set, the timer LED will remain on until the set interval is met and the dehumidifier turns off.
- Once the dehumidifier is switched off, wait 3 minutes before resuming operation.

### Note:

- Wait 3 minutes before resuming operation. After the dehumidifier has stopped (other than tank full) it will not restart for approximately 3 minutes. This is to protect the dehumidifier and is not a fault. Operation will automatically restart after 3 minutes.

## STEP 7 - CONTINUOUS DEHUMIDIFICATION

(HELP DRY LAUNDRY INDOORS) 30 - 40 %

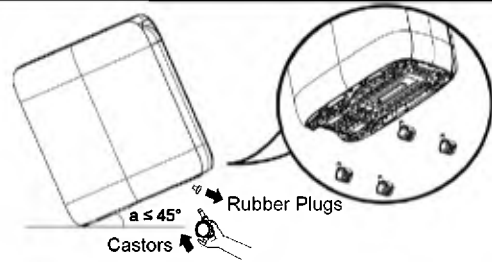
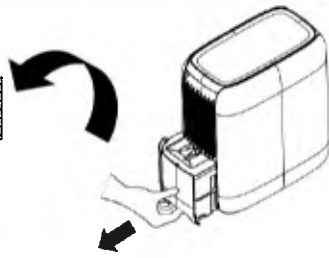
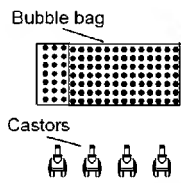
- For continuous dehumidification, set the Humidity Setting lower than 40% and the Fan Setting at High.

## USEFUL INFORMATION

- When you first use your dehumidifier set the fan to high setting to reduce the humidity quickly and to your desired humidity. This is the time when it will produce the most water and need emptying more frequently, as the humidity settles, use the low fan setting.
- **Auto Restart** - Once the power is restored after a power failure, the appliance will continue to operate at the selected settings prior to the power failure.
- **Auto Defrost** - When frost builds up on the evaporator coils, the compressor will cycle off and the fan will continue to run until the frost disappears.
- **Auto Shut off** - The dehumidifier will automatically switch off when the tank is full or removed and when humidity setting is reached.

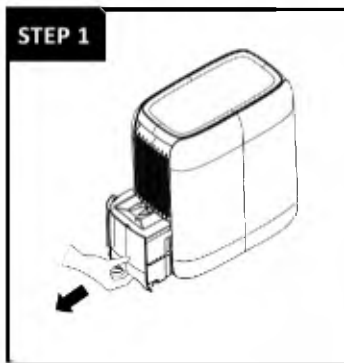
# QUICK START UP

## CASTOR WHEELS INSTALLATION

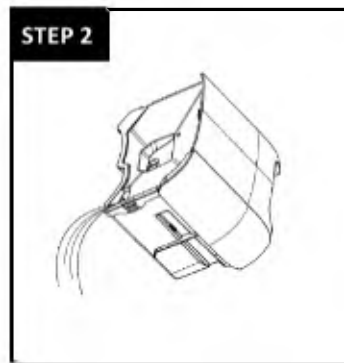


1. Take out 4 castors from the bubble bag in the water tank.
2. Tilt the dehumidifier at no more than  $45^\circ$ . Remove the four rubber feet from underneath of the unit. Aim the shaft of castor at the installation hole on chassis, and then push the castor into it. Repeat the same for the 3 other castors, then leave the unit on the up right position on the floor.

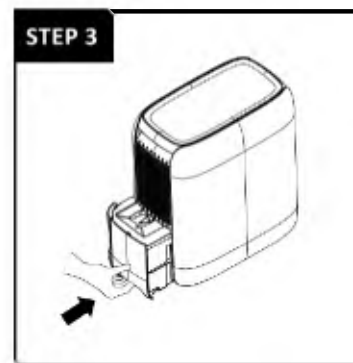
## EMPTYING THE WATER TANK



Slide water tank out



Pour the water away



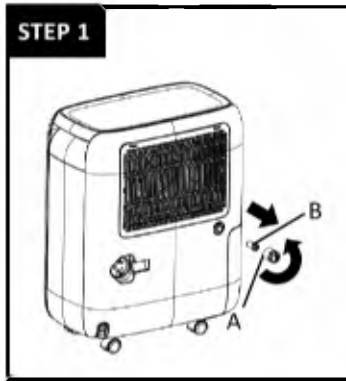
Reinsert tank correctly

1. The Water Full Indicator lights up when the water tank is full and the dehumidifier stops operating.
2. Do not move the dehumidifier or remove the water tank when the dehumidifier is running, as water may leak; causing damage to the dehumidifier or an electric shock.
3. Before removing the water tank leave the dehumidifier to stand for approximately 10 minutes to ensure all water has dripped into the water tank.
4. To remove the water tank, slide it out gently by gripping the water tank from bottom cutaway and pull out carefully.
5. Pour the water away by tilting the water tank, (see step 2 picture) to the right side. Clean the water tank if needed.
6. Reinsert the water tank to the correct position, as soon as possible to prevent water dripping from the dehumidifier.

### NOTE :

- Clean the water tank with clean water if needed. Do not use detergents, solvents, abrasives or hot water to avoid damaging the water tank or float.
- Do not remove or damage the float in the water tank or the dehumidifier will not operate properly.
- The Water Full light indicator illuminates if the water tank is not correctly in position.
- Do not tilt the dehumidifier when removing the water tank.
- If the water tank is removed whilst the dehumidifier is running the fan will continue to run for 3 minutes.

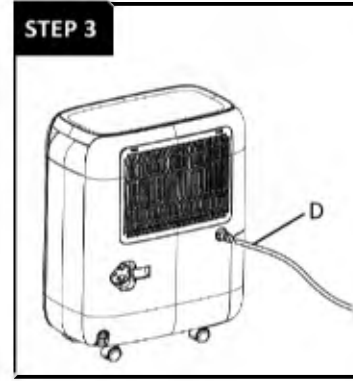
# CONTINUOUS DRAINAGE



Remove drainage cap



Attach drain connector



Insert hose in connector

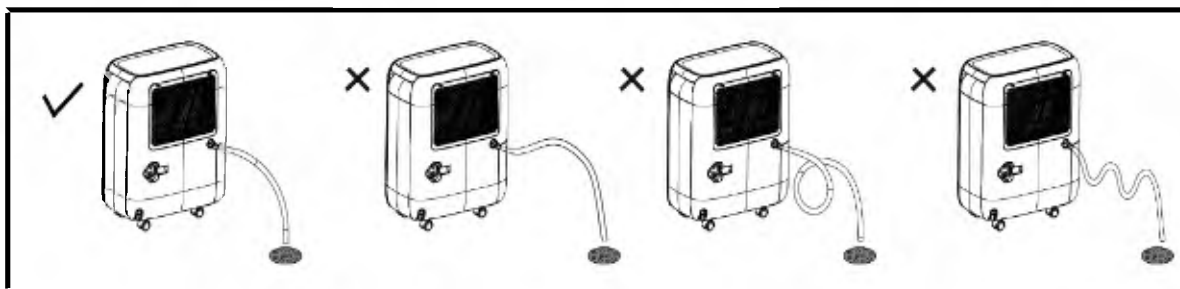
You may use a hose with an inner diameter of 14mm for continuous drainage (supplied):

1. Remove the continuous **drainage cap (A)** anti clockwise and then remove the **black rubber bung (B)** from the nozzle. Store the black rubber bung safely.
2. Attach the **drain connector (C)** provided. Insert and turn clockwise to secure to the nozzle.
3. Insert the **drainage hose (D)** into the drain connector (C). The hose must lead to an appropriate drain at a downward slope with no sharp bends.

## NOTE:

- Ensure the water tank and continuous drainage hose are well fitted in position before commencing operation.

## ATTENTION



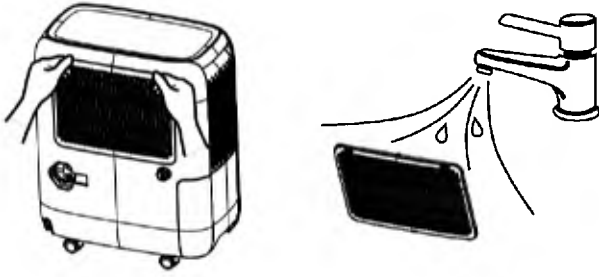
When using the continuous drainage option, place the dehumidifier on a level surface and make sure the hose is clear of any obstructions and is directed downwards.

## NOTE:

- Ensure the water tank is well fitted in position before inserting the hose.

# MAINTENANCE

## STEP 1 - CLEANING YOUR FILTER



1. Turn OFF the dehumidifier, to remove the filter press the two clips gently and pull out the filter.
2. Clean the filter lightly with a brush or vacuum cleaner or warm mild soapy water. Allow the filter to air dry fully.
3. Replace the filter back into position.
4. If the filter is covered with dust, the airflow and the performance of the dehumidifier will be affected. Check the filter periodically to ensure all dust is removed.

**Tip:** Clean your filter every 2 weeks to keep your air clean and prolong the life of your dehumidifier. The frequency will depend on the conditions of operation.

## STEP 2 - REPLACING YOUR FILTER



It is recommended that the filter is replaced every year for optimal performance and hygiene standards. To purchase a replacement filter please visit:

[www.ecoair.org](http://www.ecoair.org)

## STEP 3- CLEANING YOUR DEHUMIDIFIER

1. Turn the dehumidifier OFF, wait for the fan to stop and unplug the dehumidifier from the socket.



2. Clean the surface with a soft damp cloth.
3. Dry thoroughly with a dry towel after cleaning.
4. Empty the water tank. Allow water tank to drip dry or dry with a cloth.
5. Please take care when cleaning or drying around the float area.

### Caution:


- Do not wash the dehumidifier or immerse in water.
- Do not let water drip into the air inlet or outlet.

## STEP 4- STORING YOUR DEHUMIDIFIER

1. Turn OFF the dehumidifier, wait for the fan to stop and unplug the dehumidifier from the power socket.
2. Leave the dehumidifier to drain for approximately one day. Clean and dry the water tank.
3. Clean the filter and the dehumidifier. Cover the dehumidifier to prevent it from gathering dust. Store upright in a cool dry place.
4. Do not expose to direct sunlight.



# TROUBLESHOOTING

PROBLEM	REASON	SOLUTION
 <b>No Power</b>	Dehumidifier is not plugged in or there is no power supply	Plug the dehumidifier into mains and switch plug ON. Check the main power supply
	Dehumidifier has reached its pre-set level or tank is full.	The dehumidifier automatically turns off when either condition occurs. Change to a lower humidity setting or empty the tank and replace properly.
	Water tank is not in the proper position.	The water tank must be in place and securely seated for the dehumidifier to operate.
	Power failure/Controls cannot be set	There is a protective time delay to protect the compressor. For this reason, the dehumidifier may not start normal dehumidifying for 3 minutes after it is
<b>The Dehumidifying function does not work</b>	Ambient temperature is higher than 32° C or lower than 5°C .	Do not operate the dehumidifier in temperatures higher than 32°C or lower than 5°C.
	The setting humidity has already reached the desired humidity level.	Adjust the setting humidity.
	Room is too large	The capacity of your dehumidifier may not be adequate.
	Doors are open	Close the doors.
	Might be some device producing vapor in the room	Switch off the device which is producing the vapor.
	Filter clogged	Check and clean or replace the filter
<b>Full</b> <b>Water Full Light On</b>	Water tank is full or installed incorrectly	Empty water tank or re-install correctly
	Water float out of position	Restore water float back into position
<b>Water Leaking</b>	Dehumidifier on uneven surface or water tank fitted incorrectly	Ensure the dehumidifier is on a flat, even surface, use a spirit level to check, remove tank and replace correctly
	Damaged water tank	Remove the water tank, fill with water and place on a hard even surface to test for leaking.
	The continuous drainage is clogged or loose.	Check the continuous drainage hose and its connection
<b>Not Collecting Water</b>	Dehumidifier operating in colder environment.	Ensure room is within operating temperatures
	Did not allow enough time to remove moisture	When first installed, allowed at least 24 hours to maintain the desired dryness
	Set humidity is reached/ Low humidity	Readjust the humidity settings
	Room is very cold or very dry for the current settings	Readjust the humidity setting or increase the room temperature Check room temperature and humidity levels
	Filter dusty	Clean the air filter or replace it
	Ambient temperature is higher than 32°	Open the window or door to ventilate
<b>Noisy</b>	Ambient temperature is lower than 5°C	Increase heat in the room
	Water tank or filter fitted incorrectly	Check and refit the water tank or filter
	Dehumidifier on uneven surface	Check dehumidifier is on an even level surface
	Swooshing sound is heard.	This is normal. This is the sound of the flow of refrigerant.
<b>Odour</b>	There is sound created when air is passing through the dehumidifier.	This is normal
	When first operated, the air emitted has musty-odour	This is normal. Due to the temperature rising of heat exchanger, the air may have some strange smell at the beginning.
<b>Frost Appears on Coils</b>	Dehumidifier has been recently turned on, or room temperature is below 5°C	This is normal. Frost will usually disappear within 60 minutes. Do not operate the dehumidifier in temperatures below 5°C
<b>Dehumidifier Runs Continuously</b>	The setting humidity is too low	Reset the setting humidity slightly higher.

# TROUBLESHOOTING

PROBLEM	REASON	SOLUTION
Humidity Display shows "F0"	Ambient Temperature is lower than 5°C or filter clogged, or limited air circulation	Switch off and unplug the unit for 30 minutes. Clean the filter and switch on the unit within an ambient temperature range from 5°C ~ 32°C . Make sure the unit must be at least 40cm away from the wall or any obstructions.
Humidity Display shows "H3"	Ambient Temperature is higher than 32°C or lower than 5°C, or filter clogged.	

**In the unlikely event of a problem with your product, please refer in the first instance to:**  
**ECOAIR TECHNICAL SUPPORT**  
[www.ecoair.org/support](http://www.ecoair.org/support)

## SPECIFICATIONS

MODEL	DC12 MK2	DC14 MK2
Temperature Range	5°C ~ 32°C	
Dehumidification Extraction Rate (Max)	11 Litres/Day	13 Litres/Day
Power Supply	220 - 240V~50Hz	
Power Consumption	210W	
Water Tank Capacity	1.7 Litres	
Noise	35/ 39 dB(A)	
Refrigerant /Charge	R290/ 45 g	R290/ 55 g
Net Weight	12 Kg	
Gross Weight	13 Kg	
Net Dimension (W x H x D)	350mm x 400mm x 206mm	
Gross Dimension (W x H x D)	392mm x 437mm x 251mm	

EcoAir reserves the right to change product specifications without prior notice.

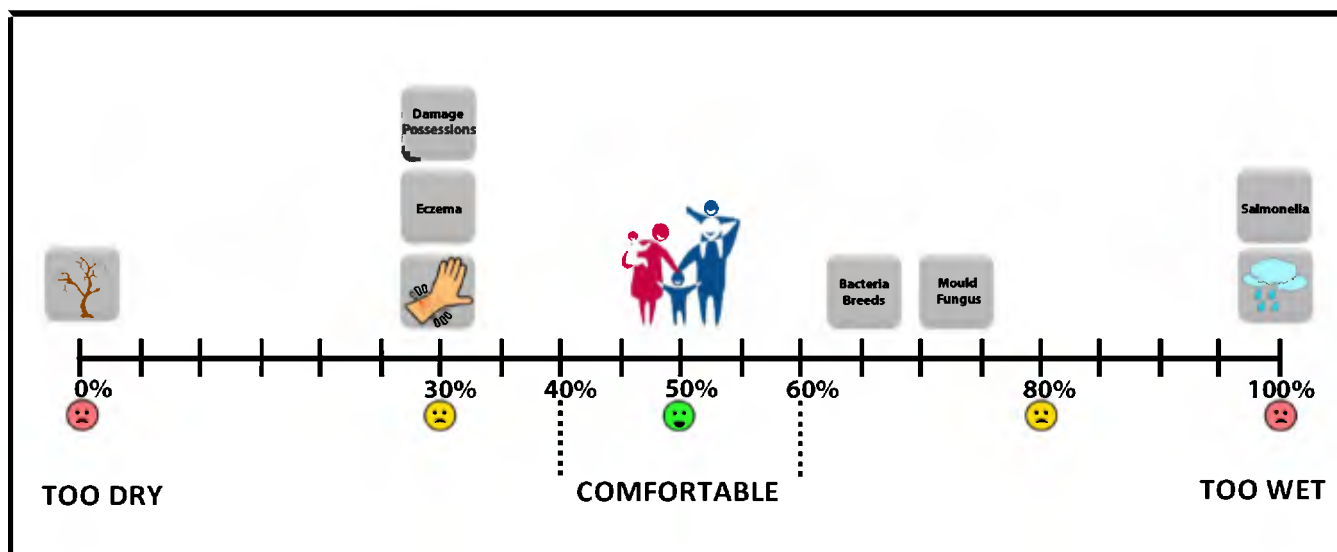
# WELCOME

Thank you and congratulations for choosing an EcoAir dehumidifier to help you control the Relative Humidity within your home. Inside this manual you will find many helpful tips on how to use and maintain your dehumidifier efficiently. Just a little preventative care can save you money and prolong the life of your dehumidifier.

The purpose of the dehumidifier is to remove the excess moisture in the air by detecting the humidity level in the room. By keeping humidity within recommended levels, a dehumidifier combats household damp, mould and mildew. Dehumidifiers can help to reduce the symptoms of asthma, allergies, and other respiratory health conditions. They can also be used to help dry laundry quicker and control moisture-based damage (such as the aftermath of flooding, leaks or rising damp) to valuable belongings and furniture.

## HUMIDITY GUIDE

There will always be water vapour in the air. The water vapour (or commonly known as moisture) in the air is measured in % Relative Humidity (RH). RH is the ratio of the actual amount of water vapour in the air to the amount it could hold when saturated expressed as a percentage. Too much or too little moisture in our homes can be unhealthy and uncomfortable. The optimum humidity level is between 40% and 60% (RH) where we feel most comfortable.



## LOW HUMIDITY

Low humidity indoors causes excess drying which can trigger skin irritations such as eczema, chapped skin and dry nose. It can also damage possessions, such as wooden furniture, musical instruments and artwork by drying it out too much.

## HIGH HUMIDITY

High humidity indoors causes damp and condensation. The damp left by condensation can damage plaster, wall paper, furniture, vehicles, timber windows, doors and clothes. It can be harmful to our health when bacteria thrives, causing mould and fungus.

## MAINTAINING SAFE LEVELS OF HUMIDITY

It is important to maintain a consistent humidity range to preserve furniture, paintings, door and window frames. High humidity causes swelling, corrosion, softening of glues and paint. Low humidity causes shrinking, cracking, warping of wood surfaces and gaps in joints, doors and windows. Frequent changes in humidity levels can accelerate damages to property and belongings.

## CONDENSATION

The warmer the air, the more moisture the air can hold than colder air. So, when the air inside the house becomes colder, the moisture contents in the air becomes saturated, and gets heavier resulting in moisture concentration on the coldest parts of the house particularly on the windows, bathroom mirrors and walls. This is condensation, caused by a sudden increase in humidity, cooking, showers, drying clothes, inadequate ventilation and poor thermal insulation.

Condensation does not disappear instantly even with the dehumidifier on. Where excessive condensation appears for example, on your windows, you may want to open your windows to expel the excess humidity for several minutes. It will take a while for the condensation to generally increase the humidity in the room. Once the humidity level in the room around the dehumidifier is increased above the level you have set on the dehumidifier, it will then begin the dehumidification process.

# GUARANTEE CARD

EcoAir guarantees this product to be free from defects in materials and workmanship for a period of (2) years from the date of purchase. Coverage is valid only with proof of purchase.

## Warranty Terms and Conditions

The conditions below apply to our warranty. They do not affect your statutory rights or the obligations of your retailer and your contract with them.

We provide warranty cover for this appliance subject to the following conditions:

1. We will rectify defects affecting the appliance which are clearly attributable to material and/or manufacturing faults, provided they are reported immediately after being identified within the Warranty Period supported by proof of purchase.
2. Service may not be available to all the islands around the UK. Please check with your retailer or contact our customer service department.
3. The warranty will not extend to consumables such as air filters.
4. Warranty liability will not be triggered by minor variances from nominal features which are of no significance to the appliance's value or fitness for purpose, nor damage caused by wear and tear, exceptional environmental conditions and inappropriate operating conditions.
5. No warranty liability will be accepted:-
  - a. If the defects stem from transport damage for which we are not responsible.
  - b. Improper installation and assembly or non-compliance with the safety regulations and warnings given in the operating instructions.
  - c. Improper use, to also include poor maintenance caused by insufficient aftercare or cleaning and failure to observe operating or assembly instructions or use with improper voltage recommendations.
  - d. Use in a non-domestic environment, to include appliance for rental.
6. No rights are given under this warranty to a person acquiring the appliance second hand.
7. The warranty will be invalidated: -
  - a. If repairs or other interventions are performed by persons not authorised by us.
  - b. If our appliances are fitted with non-original spare parts, extras or accessories.
  - c. If our appliance has been altered and damaged by owner or third parties.
  - d. In the event of abuse (whether physical or verbal abuse) towards any member of staff.
8. Warranty provision will be free of charge and we will decide whether this will take the form of a repair or the replacement of the appliance. Small appliances that can be reasonably transported or posted may need to be handed over or shipped to our customer service centre. A purchase receipt must be presented in each case. Replaced parts pass into our ownership.
9. Under no circumstances shall the application of this warranty give rise to the complete replacement of the appliances. In the event of a replacement appliance being supplied at our discretion, we reserve the right to charge an appropriate monetary offset in respect of the period of use already enjoyed.
10. The provision of services under warranty neither extends the term of the warranty nor sets in motion a new Warranty Period. The Warranty Period for spare parts fitted ends with the expiry of the warranty on the appliance as a whole.
11. EcoAir shall not be liable for loss of goods, loss of use, or any special, indirect, consequential or pure economic loss, costs, damages, charges or expenses.
12. Our Warranty service is on a return to base basis.


These warranty conditions apply to appliances purchased in the United Kingdom. If appliances shipped to other countries feature the appropriate technical conditions (e.g. voltage, frequency, gas-types etc.) for the climatic and environmental conditions in the country concerned, the terms of the warranty will apply, provided a local customer service network exists. Appliances purchased outside the United Kingdom are subject to the warranty conditions published by the appropriate local representative office of that country. These can be obtained via the specialist dealer from whom you bought appliance.

# BS PLUG WIRING

**Wiring Instructions:** Should it be necessary to change the plug, please note the wires in the mains lead are coloured in accordance with the following codes:

**BLUE - NEUTRAL**  
**BROWN – LIVE**  
**GREEN AND YELLOW - EARTH**

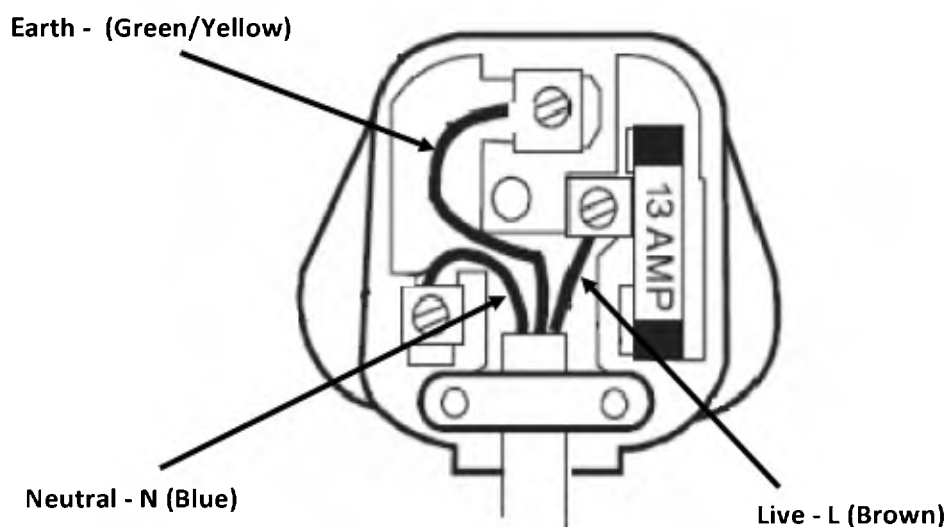
In the event that the colours of the wires in the mains lead of this appliance does not correspond with the coloured markings identifying the terminals in your plug, proceed as follows:

1. The **BLUE** wire is **NEUTRAL** and must be connected to the terminal which is marked with the letter **N** or coloured **BLACK**.
2. The **BROWN** wire is **LIVE** and must be connected to the terminal which is marked with the letter **L** or coloured **RED**.
3. The **GREEN/YELLOW** is **EARTH** and must be connected to the terminal which is marked with the letter **E** or  or coloured **GREEN** or **GREEN/YELLOW**.
4. Always ensure that the cord grip is positioned and fastened correctly.

If a **13A (BS 1363)** fused plug is used it must be fitted with a **13A** -fuse. If in doubt consult a qualified electrician.

## Wiring for a 13 Amp Plug (BS1363)

Please note. The Earth Terminal is marked with the letter **E** or  Earth Symbol.



# IMPORTANT SAFETY INSTRUCTIONS

**PLEASE READ ALL INSTRUCTIONS CAREFULLY BEFORE OPERATING.**

## **WARNING!**

This appliance is intended for domestic use only. It is not suitable for outdoor use. Any other use is not recommended by the manufacturer and may cause fire, electrical shocks or other injuries to person or property. EcoAir cannot be held liable for damage resulting from incorrect or improper use or operation.



**When using electrical appliances, basic safety precautions should always be followed:**

1. Do not operate the appliance if there is a damaged cord, plug or after it malfunctions if it has been dropped or damaged in any way. Arrange for the appliance to be examined or repaired by an authorised technician.
2. Always keep the appliance in an upright position to avoid any damage. Place the appliance on an even level surface during operation.
3. Ensure the household voltage matches the rated specification for the appliance before use.
4. Ensure that the air inlets and outlets are not blocked or covered. Do not insert fingers or any objects into the air inlet or outlet openings.
6. Do not place the unit too close to curtains or any other objects, keep minimum distance of 40cm.
7. Never place anything on top of the appliance and do not cover while in use.
8. To protect against electric shocks, do not immerse or spray the appliance or any of its parts in water.
9. Never unplug the power cord without switching OFF the appliance first.
10. Always unplug the appliance when not in use or when moving location. To disconnect the appliance from the power supply, grip the plug and pull from the power socket. Never pull by the cord.
11. Always empty the internal water tank before storing the appliance away.
12. Close supervision is necessary when the appliance is used in the presence of children and pets.
13. Do not run power cord under carpeting, or cover with rugs or runners. Arrange the cord away from areas where it may become a trip hazard.
14. Never operate or store the appliance in direct sunlight.
15. Never open the unit casing yourself and attempt to repair. Repairs must be carried out by an authorised EcoAir technician using original parts, failure to do so will risk damage to the appliance or injury to persons or property and will void the warranty.
16. Do not connect via an extension lead or Multi-socket plug. As it is a fire hazard.
17. Do not use the appliance without the air filter. Check and clean the air filter every two weeks. Excess dust on filters is a fire hazard.
18. Do not leave the appliance unattended over a long period of time. Leaving your appliance unattended for long periods of time with an uncleaned filter may lead to overheating.
19. Do not use the Laundry Mode function over a long period of time. Do not put clothes above the appliance to dry and keep the laundry at a safe distance from the dehumidifier.
20. At the end of its working life dispose of the appliance responsibly, in accordance with local regulations.
21. Before cleaning or maintaining the appliance, please turn off the power and unplug.
22. Do not insert or pull out the power plug with wet hands.
23. Do not operate heating equipment around the appliance.
24. Keep a safe distance from fire source, inflammable and explosive objects.
25. This appliance is not for use in a commercial environment, such as Server Room, factory or any other similar environment.
26. Dispose of the water collected from the dehumidifier, this water is not drinkable.
27. Do not remove the water tank when running, this may cause water to leak.
28. Do not leave the end of continuous drainage hose outside when the temperature is below 1°C.


This appliance is not intended for use by persons (including children) with reduced physical, sensory or mental capabilities, unless they have been given supervision or instruction concerning use of the appliance by a person responsible for their safety. Children should be supervised to ensure that they do not play with the appliance.

**READ & SAVE THESE IMPORTANT SAFETY INSTRUCTIONS FOR FUTURE REFERENCE**

# The Refrigerant R290 Gas

	<p>Read the precautions in this manual carefully before operating the unit.</p>		<p>This appliance contains <b>45g and 55g</b> of R290 refrigerant gas respectively for DC12 MK2 and DC14 MK2.</p>
---	---	---	---

- R290 refrigerant gas complies with European environmental directive.**
- R290 is a non-polluting refrigerant with no harm to the ozone. R290 presents good thermodynamic features resulting in very high energy efficiency.

 <b>WARNING</b>	
1.	Appliance must be installed, operated and stored in an area greater than 4 m <sup>2</sup> .
2.	The appliance must be placed in an area without any continuous sources of ignition . (for example: open flames, gas or electrical appliances in operation).
3.	The appliance shall be installed, operated or stored in a well-ventilated area where the room size corresponds to the room area as specified for operation.
4.	The appliance shall be stored so as to prevent mechanical damage from occurring.
5.	Keep any required ventilation openings clear of obstruction.
6.	Do not pierce or burn.
7.	Technicians who operate or work on the refrigerant circuit must be qualified and accredited by the governing local authority such as the F-Gas authority that ensures competence in handling refrigerants.
8.	Do not use means to accelerate the defrosting process or to clean, other than those recommended by the manufacturer.
9.	Repairs must be performed based on the recommendations from the manufacturer. Maintenance and repairs must be performed by qualified and competent technician specifically in the use of flammable refrigerants.
10.	The appliance shall be used only in an area where the room must be designed to prevent the accumulation of refrigerant leaks resulting in a risk of fire or explosion due to ignition of the refrigerant circuit of the refrigerant caused by electric heaters, stoves or other sources of ignition.

<b>Exception Clauses</b>	
<p>Manufacturer will bear no responsibilities when personal injury or property loss is caused by the following reasons.</p>	
1.	Damage to the product due to improper use or misuse of the product.
2.	Alter, maintain or use the product with other equipment without abiding by the instruction manual .
3.	Defects due to improper storage or transportation.
4.	Replacing parts and components produced by other manufacturers.
5.	The damage is caused by natural calamities, bad using environment or force majeure.